

P3 / 1916 MLK COLLABORATION SPACE & THE BLACK PINEAPPLE

1916 N Dr. Martin Luther King Drive • Milwaukee, WI 53212



VENUE POINT OF CONTACT

Genyne Edwards JD

414-339-7617

genyne@p3developmentgroup.com

www.p3developmentgroup.com /

www.theblackpineapple.com

VENUE DESCRIPTION

Unique small venue w/ great, flexible space for in/outdoor special events. Mixed-use National Historic District - 1874 bldg. Past uses include: wine tastings, garden parties, meetings, trainings, deck/lawn events. Large wrap around wooden deck, great landscaping, iron fence and access from street & alley. Basement w/ add'l bathroom for use and/or event storage.

VENUE INFORMATION

Capacity: 100

Number of Event Spaces: 2 (1 indoor and 1 outdoor)

Outdoor Space: Yes

ADA Accessible: Yes

Employee Makeup: Non-Union Employees

Venue Ownership: Woman-owned, Minority-owned

VENUE BREAKDOWN

Space Sq Ft: 1,800 Sq Ft

Largest Capacity Space: 100

Cocktail Capacity: 100

Theater Capacity: 75-100

Classroom Capacity: 10-12 indoors or 75 outdoors

Boardroom Capacity: 10-12 indoors

Banquet Capacity: 50-75

VENUE CAN ACCOMMODATE

Seated Breakfast

Buffet Breakfast

Seated Lunch

Buffet Lunch

Cocktail Reception

Seated Dinner

Buffet Dinner

Panel Discussion

Theater Style Event

Classroom Style Event

Boardroom Style Event

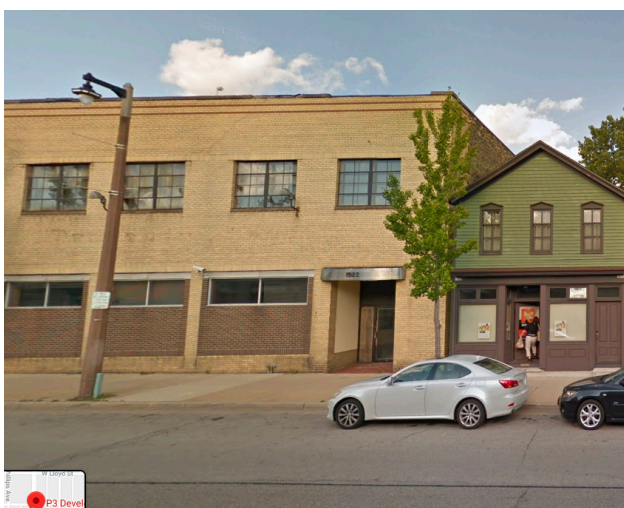
Live Performance

With Stage

Live Performance

Without Stage

Late Night Event



The information included in this listing has been provided by the venue.

Para español, por favor visite milwaukee2020.com/venue-search.

For more information, visit milwaukee2020.com/venue-search.