



## VENUE POINT OF CONTACT

**Renee Klatt**

414-256-5432

[renee.klatt@milwaukeecountywi.gov](mailto:renee.klatt@milwaukeecountywi.gov)

[www.milwaukeezoo.org](http://www.milwaukeezoo.org)

## VENUE DESCRIPTION

The Milwaukee County Zoo offers a wide range of rental facilities and settings for your daytime meeting, luncheon, or after hour event. Recognized as one of the country's finest zoological attractions. Our 200-acre park is the ideal site for your next function.

## VENUE INFORMATION

**Capacity:** 15,000

**Number of Event Spaces:** 20

**Outdoor Space:** Yes

**ADA Accessible:** Yes

**Employee Makeup:** Non-Union Employees

**Venue Ownership:** ---

## VENUE BREAKDOWN

**Space Sq Ft:** 21,000 Sq Ft

**Largest Capacity Space:** 15,000

**Cocktail Capacity:** 1,000

**Theater Capacity:** 600

**Classroom Capacity:** 500

**Boardroom Capacity:** 25

**Banquet Capacity:** 800



## VENUE CAN ACCOMMODATE

Seated Breakfast

Buffet Breakfast

Seated Lunch

Buffet Lunch

Cocktail Reception

Seated Dinner

Buffet Dinner

Panel Discussion

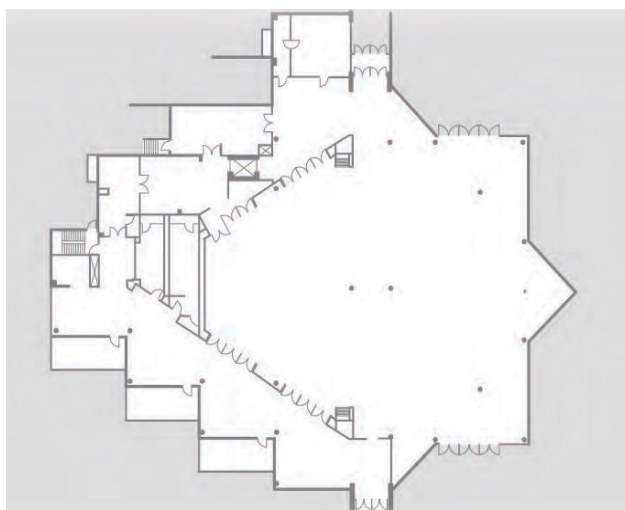
Classroom Style Event

Boardroom Style Event

Live Performance  
With Stage

Live Performance  
Without Stage

Late Night Event



The information included in this listing has been provided by the venue.

Para español, por favor visite [milwaukee2020.com/venue-search](http://milwaukee2020.com/venue-search).

For more information, visit [milwaukee2020.com/venue-search](http://milwaukee2020.com/venue-search).