

MERCANTILE HALL

425 N Pine Street • Burlington, WI 53105



VENUE POINT OF CONTACT

Wendy Lynch

262-806-2629

wendy@mercantilehall.com

www.mercantilehall.com

VENUE DESCRIPTION

Mercantile Hall is located in the heart of downtown historic Burlington, a city that is undergoing a massive (positive) transformation. Woman owned, fully staffed, full service. 100% accessible. Complete availability for utilization throughout entire convention. Industrial style venue. Secure entrances available. Abundant free parking.



VENUE INFORMATION

Capacity: 101-500

Number of Event Spaces: 1

Outdoor Space: Yes

ADA Accessible: Yes

Employee Makeup: Non-Union Employees

Venue Ownership: Women-owned

VENUE BREAKDOWN

Space Sq Ft: 6,000 Sq Ft

Largest Capacity Space: --

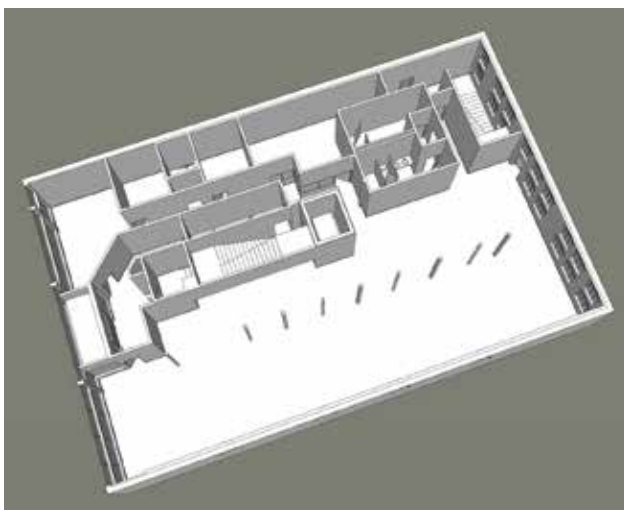
Cocktail Capacity: 330

Theater Capacity: 250

Classroom Capacity: 180

Boardroom Capacity: --

Banquet Capacity: 230



VENUE CAN ACCOMMODATE

Seated Breakfast

Buffet Breakfast

Seated Lunch

Buffet Lunch

Cocktail Reception

Seated Dinner

Buffet Dinner

Panel Discussion

Theater Style Event

Classroom Style Event

Boardroom Style Event

Live Performance

w/ Stage

Live Performance

w/o Stage

Late Night Event

The information included in this listing has been provided by the venue.

Para español, por favor visite milwaukee2020.com/venue-search.

For more information, visit milwaukee2020.com/venue-search.