



© Heather Cook Elliott Photography



## VENUE POINT OF CONTACT

**Andrea Buboltz**

920-585-4075

andrea@sur-g.com

www.surgonthewater.com

## VENUE DESCRIPTION

SURG on the Water is set in the beautiful Historic Third Ward, featuring a spacious patio overlooking the Milwaukee River. This timeless banquet space is fully customizable and offers all-inclusive catering and event staff. Smaller parties can enjoy cocktail hours and intimate presentations in SURG on the Water's bar area.

## VENUE INFORMATION

**Capacity:** 350

**Number of Event Spaces:** 3

Dining Room, Outdoor Patio, Bar Area

**Outdoor Space:** Yes

**ADA Accessible:** Yes

**Employee Makeup:** Non-Union Employees

**Venue Ownership:** --

## VENUE BREAKDOWN

**Space Sq Ft:** 5,000 sq ft

**Largest Capacity Space:** Dining Room

**Cocktail Capacity:** 350

**Theater Capacity:** n/a

**Classroom Capacity:** n/a

**Boardroom Capacity:** n/a

**Banquet Capacity:** 240

## VENUE CAN ACCOMMODATE

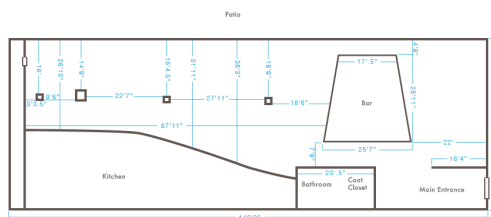
Seated Breakfast  
Buffet Breakfast  
Seated Lunch  
Buffet Lunch  
Cocktail Reception  
Seated Dinner  
Buffet Dinner

Panel Discussion  
Classroom Style Event  
Boardroom Style Event  
Live Performance  
Without Stage  
Late Night Event



### FLOORPLAN TEMPLATE

surgonthewater.com



SCALE 1/200

The information included in this listing has been provided by the venue.

Para español, por favor visite [milwaukee2020.com/venue-search](http://milwaukee2020.com/venue-search).

For more information, visit [milwaukee2020.com/venue-search](http://milwaukee2020.com/venue-search).