

THE RUBY TAP - WAUWATOSA AVENUE

1341 Wauwatosa Avenue • Wauwatosa, WI 53213



VENUE POINT OF CONTACT

Sarah Nelson

248-506-8152

sarah@therubytap.com

www.therubytap.com

VENUE DESCRIPTION

A locally owned wine bar in the Wauwatosa village with 32 wines in self-serve Enomatic wine machines, tap wines and bottled beers. Our food menu consists of cheese and meat plates, truffle popcorn and other small plates. We have a smaller lounge area for rental or the entire bar.

VENUE INFORMATION

Capacity: 75

Number of Event Spaces: 2

Outdoor Space: Yes

ADA Accessible: Yes

Employee Makeup: Non-Union Employees

Venue Ownership: Women-owned

VENUE BREAKDOWN

Space Sq Ft: 2000 sq ft

Largest Capacity Space: 75

Cocktail Capacity: 75

Theater Capacity: 40

Classroom Capacity: 40

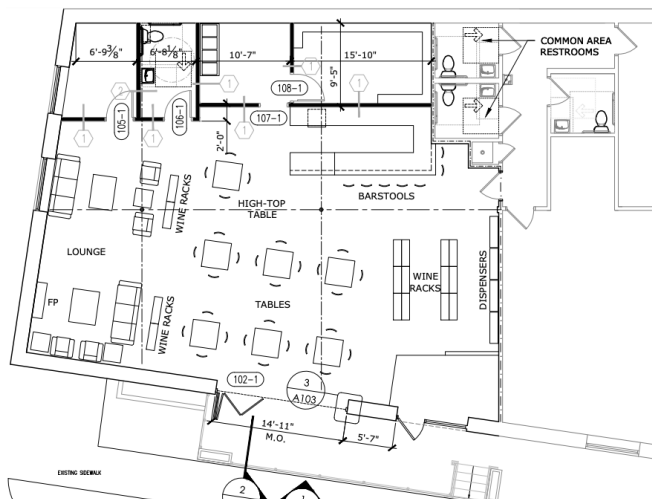
Boardroom Capacity: 40

Banquet Capacity: 40

VENUE CAN ACCOMMODATE

Seated Breakfast
Buffet Breakfast
Seated Lunch
Buffet Lunch
Cocktail Reception
Seated Dinner
Buffet Dinner
Panel Discussion

Theater Style Event
Classroom Style Event
Boardroom Style Event
Live Performance
Without Stage
Late Night Event



The information included in this listing has been provided by the venue.

Para español, por favor visite milwaukee2020.com/venue-search.

For more information, visit milwaukee2020.com/venue-search.