



## VENUE POINT OF CONTACT

**Marisa Matthiesen**

414-455-0372

[mmatthiesen@hansenreynolds.com](mailto:mmatthiesen@hansenreynolds.com)

[www.hansenreynolds.com](http://www.hansenreynolds.com)

## VENUE DESCRIPTION

Our 11,000 sq ft office space has a large two-story open main area, two conference rooms, and a 2,000 sq ft deck with amazing views of downtown Milwaukee and the Historic Third Ward. We are one block north of the Kimpton Hotel.



## VENUE INFORMATION

**Capacity:** 150

**Number of Event Spaces:** 1

**Outdoor Space:** Yes

**ADA Accessible:** Yes

**Employee Makeup:** Non-Union Employees

**Venue Ownership:** --

## VENUE BREAKDOWN

**Space Sq Ft:** 10,000+ Sq Ft

**Largest Capacity Space:** 150

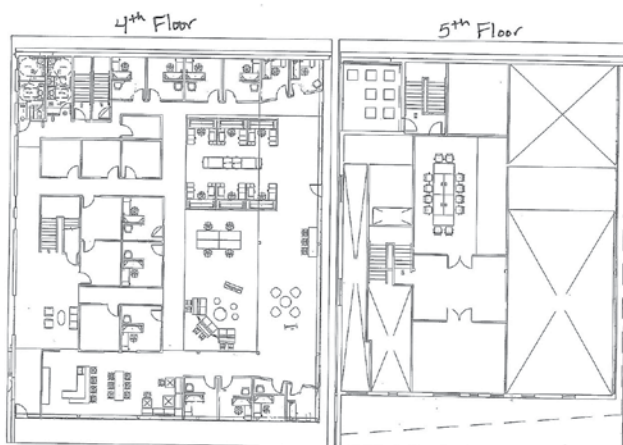
**Cocktail Capacity:** 150

**Theater Capacity:** 30

**Classroom Capacity:** 30

**Boardroom Capacity:** 30

**Banquet Capacity:** 150



## VENUE CAN ACCOMMODATE

Seated Breakfast

Buffet Breakfast

Seated Lunch

Buffet Lunch

Cocktail Reception

Seated Dinner

Buffet Dinner

Panel Discussion

Theater Style Event

Classroom Style Event

Boardroom Style Event

Live Performance

w/o Stage

Late Night Event

The information included in this listing has been provided by the venue.

Para español, por favor visite [milwaukee2020.com/venue-search](http://milwaukee2020.com/venue-search).

For more information, visit [milwaukee2020.com/venue-search](http://milwaukee2020.com/venue-search).