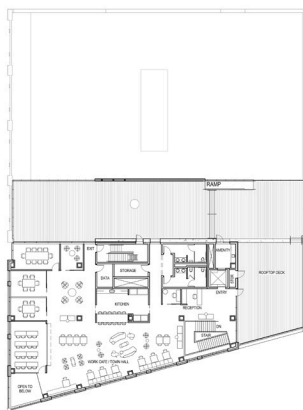


WATERMARK @ MERCANTILE BUILDING



## VENUE POINT OF CONTACT

**Matt Bartel**

262-751-3719

[mbartel@watermarkinsights.com](mailto:mbartel@watermarkinsights.com)

[www.watermarkinsights.com](http://www.watermarkinsights.com)

## VENUE DESCRIPTION

Modern, beautiful, two-year old construction with floor-to-ceiling glass windows. As Silicon Valley-grade of office space as it comes in Milwaukee. Easily Milwaukee's most beautiful office space. Huge 4,000 square foot outdoor terrace overlooking downtown Milwaukee with a connected 4,000 square foot cafe area with a moss wall and walnut wall features.

## VENUE INFORMATION

**Capacity:** 500

**Number of Event Spaces:** 1

**Outdoor Space:** Yes

**ADA Accessible:** Yes

**Employee Makeup:** Non-Union Employees

**Venue Ownership:** --

## VENUE BREAKDOWN

**Space Sq Ft:** 20,000 sq ft

**Largest Capacity Space:** 20,000 sq ft

**Cocktail Capacity:** 500

**Theater Capacity:** 40

**Classroom Capacity:** 200

**Boardroom Capacity:** 100

**Banquet Capacity:** 200

## VENUE CAN ACCOMMODATE

Seated Breakfast

Buffet Breakfast

Seated Lunch

Buffet Lunch

Cocktail Reception

Seated Dinner

Buffet Dinner

Panel Discussion

Theater Style Event

Classroom Style Event

Boardroom Style Event

Live Performance

With Stage

Live Performance

Without Stage

Late Night Event

The information included in this listing has been provided by the venue.

Para español, por favor visite [milwaukee2020.com/venue-search](http://milwaukee2020.com/venue-search).

**For more information, visit [milwaukee2020.com/venue-search](http://milwaukee2020.com/venue-search).**